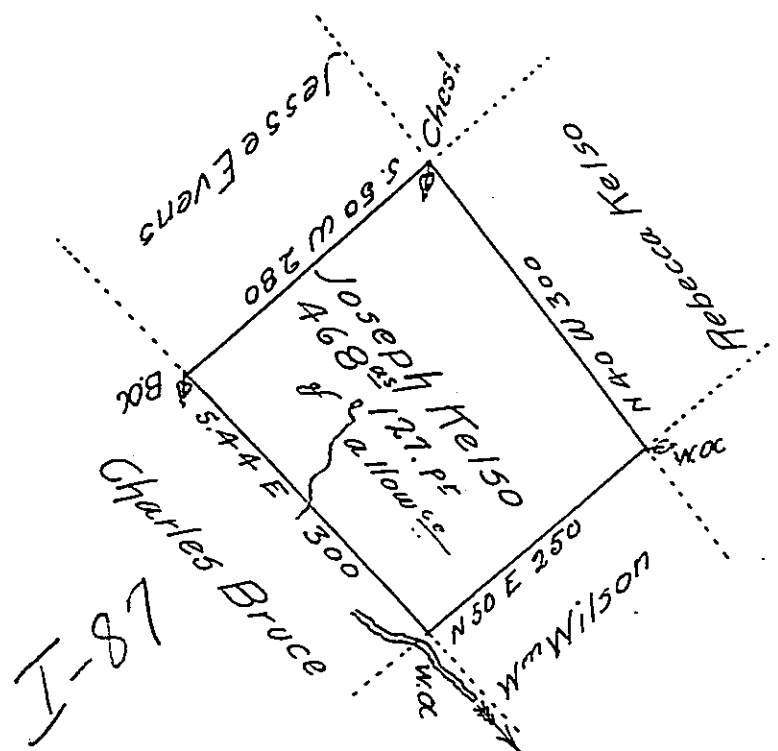


1720-356



Situate on the water of Marsh Creek in Bald Eagle Township
 in the County of Mifflin. Surveyed on the 24 day of May 1794
 for Josip Kelso by Virtue of his warrant bearing date on the
 25 day of January 1794. Containing four hundred sixty eight
 acres. one hundred twenty seven perches & the usual allow

Jo J Wallis D.S.

To Daniel Brodhead Esq^r
 Surveyor General.

IN TESTIMONY that the above is a copy of the original remaining on file in
 the Department of Internal Affairs of Pennsylvania, made
 conformably to an Act of Assembly approved the 16th day of
 February, 1833, I have hereunto set my Hand and caused
 the Seal of said Department to be affixed at Harrisburg,
 this thirteenth day of July 1905

Goach B Brown
 Secretary of Internal Affairs.